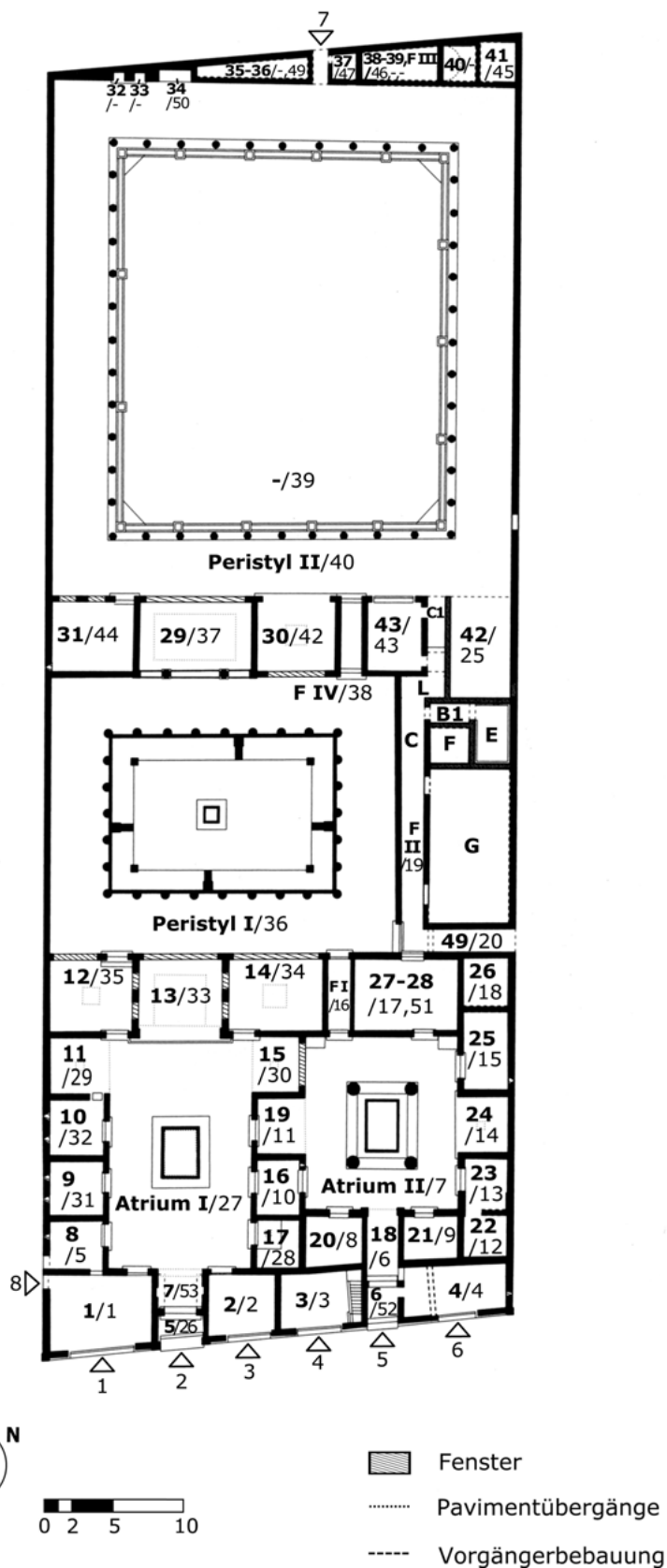
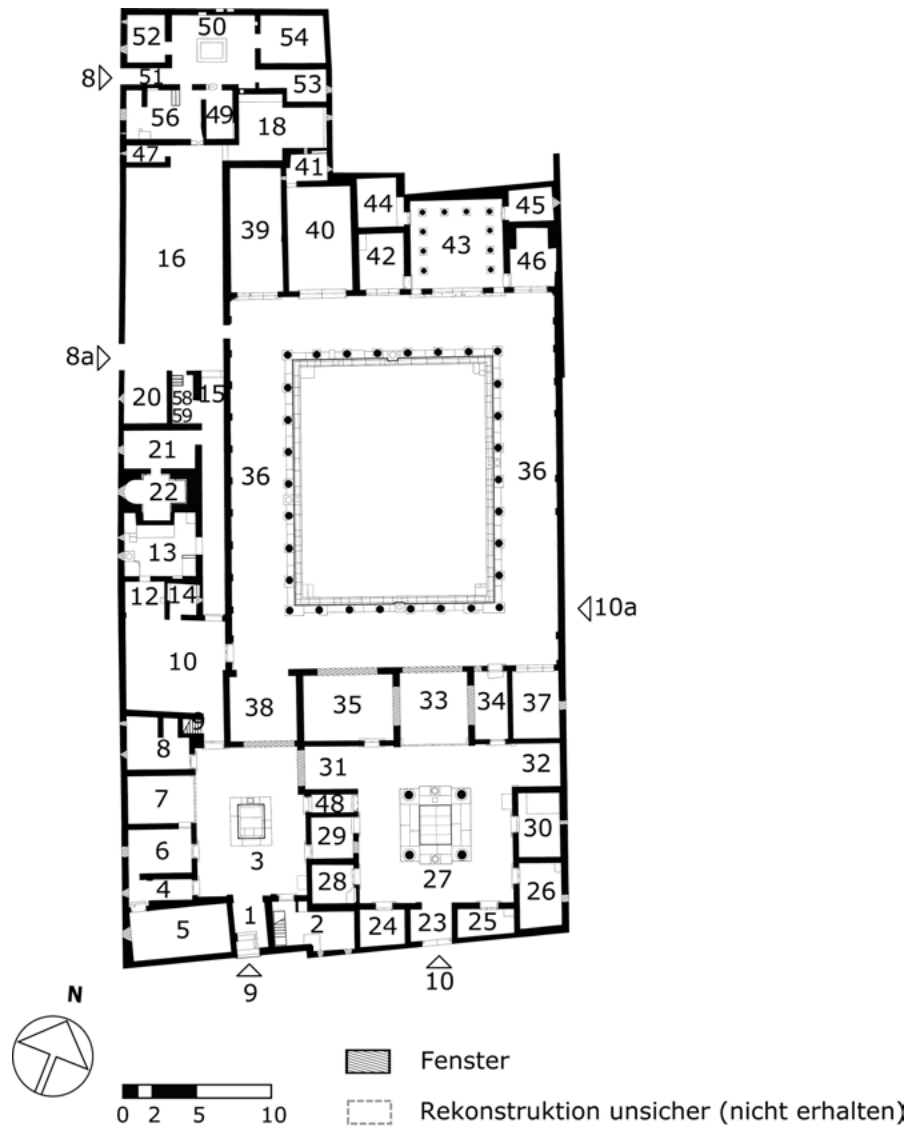


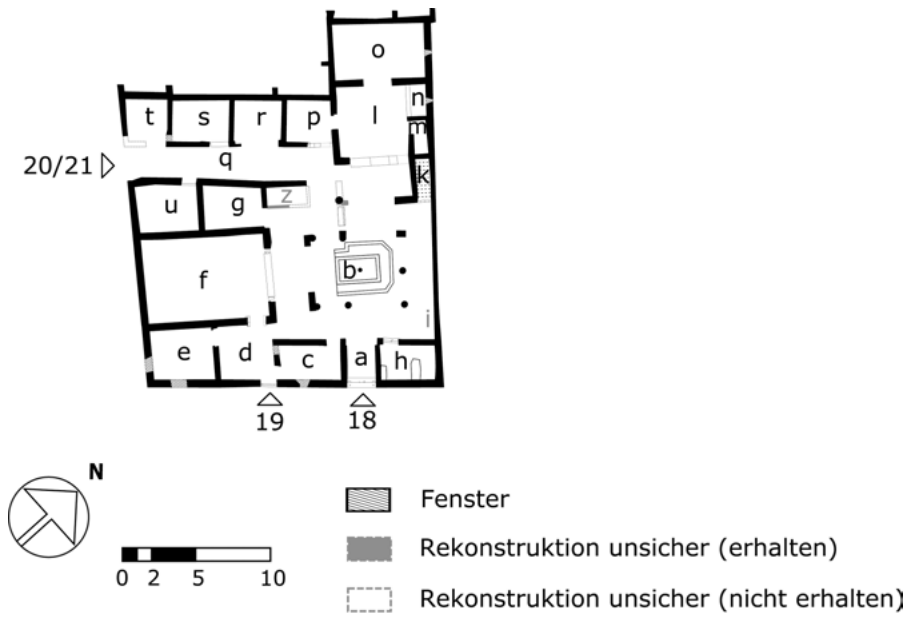
Pläne



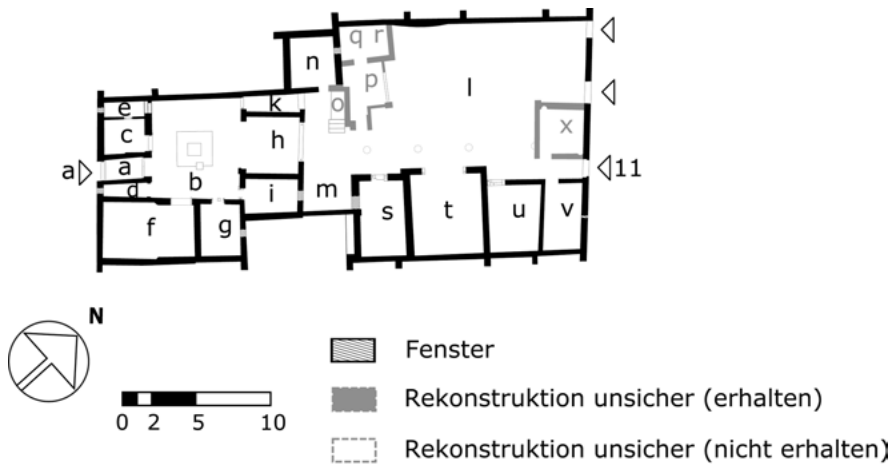
Plan 1: Casa del Fauno (VI 12,2.5), Anfang 1. Jh. v. Chr.



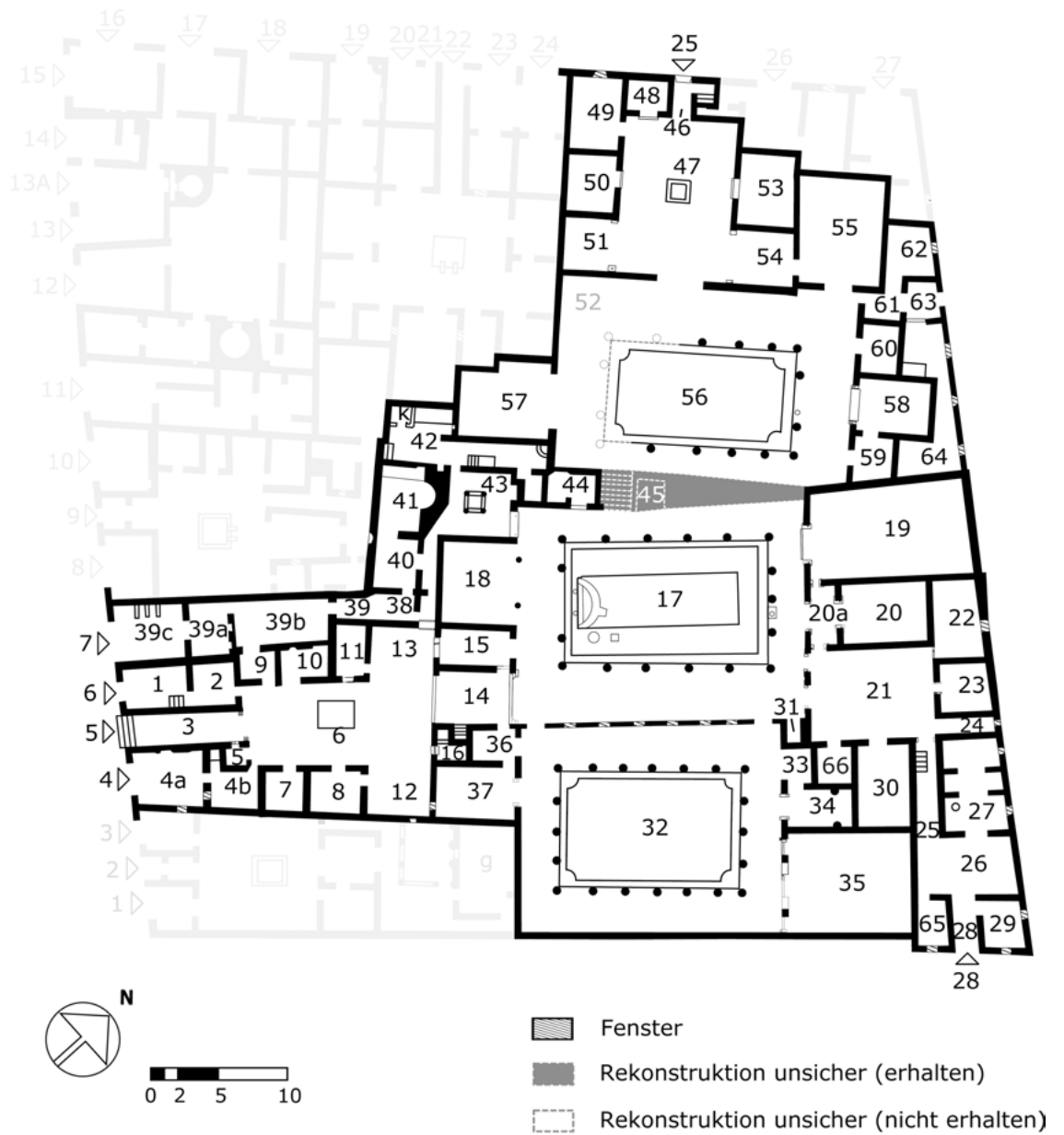
Plan 2: Casa del Labirinto (VI 11,8-10), Mitte 1. Jh. v. Chr.



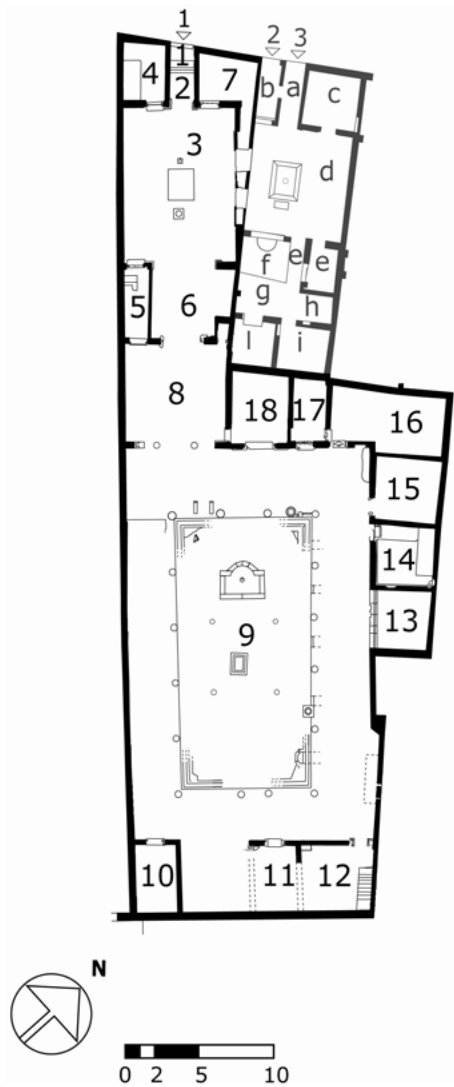
Plan 3: Casa di Giasone (IX 5,18), augusteisch.



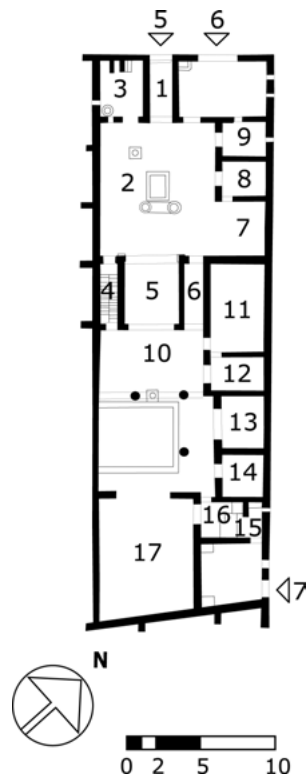
Plan 4: Casa di Marcus Lucretius Fronto (V 4,a), Mitte 1. Jh. n. Chr.



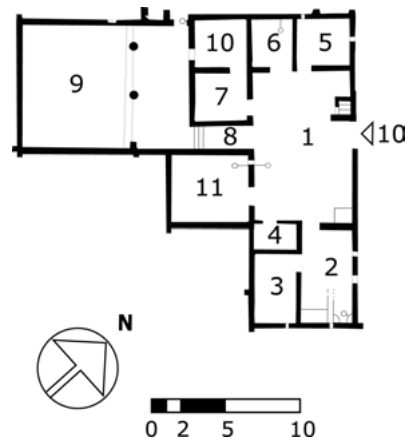
Plan 5: I 4,5.6.25.28 (Casa del Citarista), augusteisch.



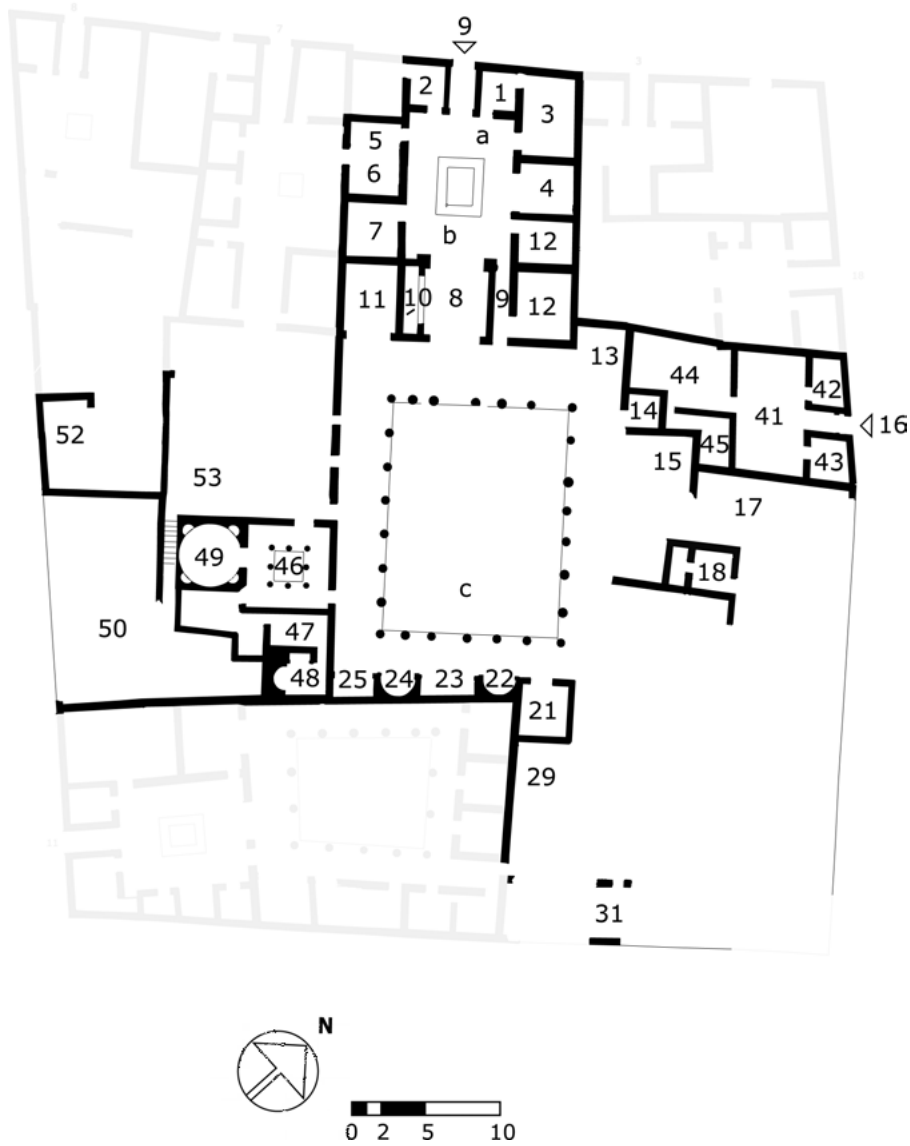
Plan 6: I 7,1 Casa di Paquius Proculus/Cuspius Pansa und Casa di Fabius Amandus (I 7,2.3), augusteisch.



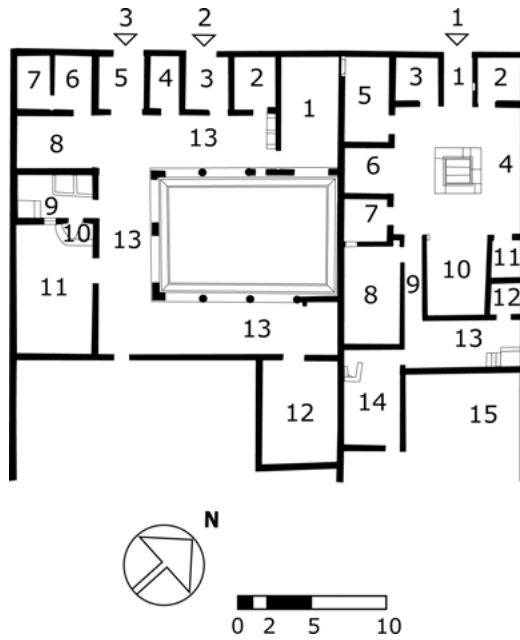
Plan 7: I 9,5 (Casa del Frutteto), augusteisch.



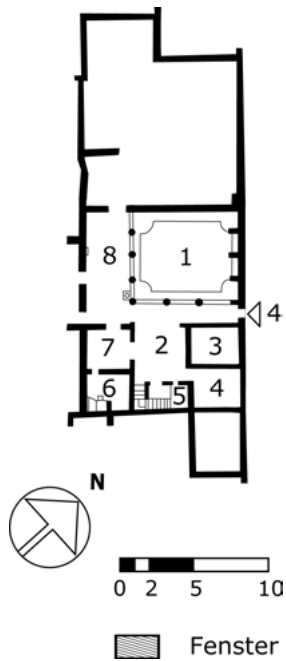
Plan 8: I 9,10, 2.Jh.v. Chr.



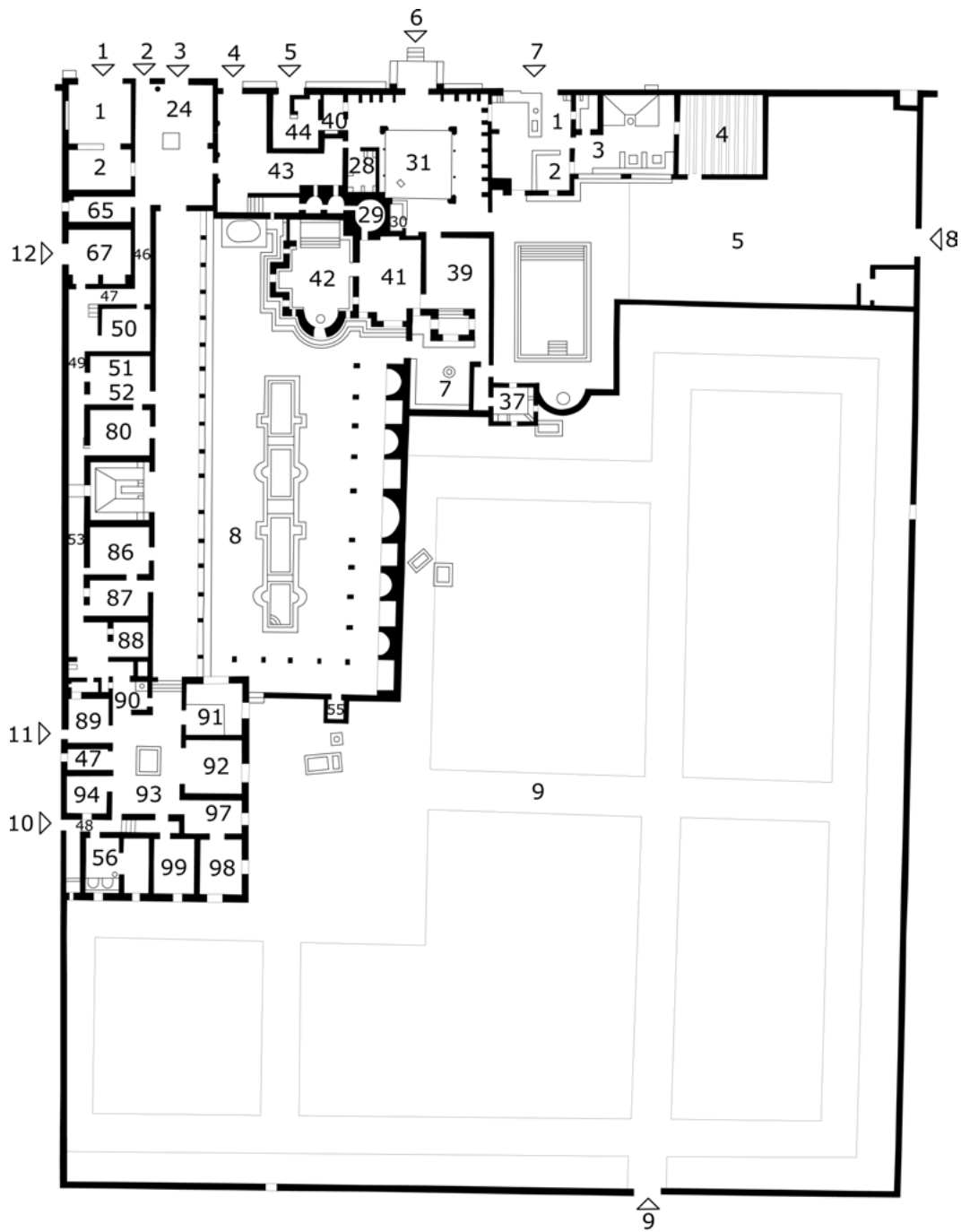
Plan 9: I 10,4 (Casa del Menandro), 2./1. Jh. v. Chr.



Plan 10: I 15,3 (Casa della nave Europa), 2. Jh. v. Chr.



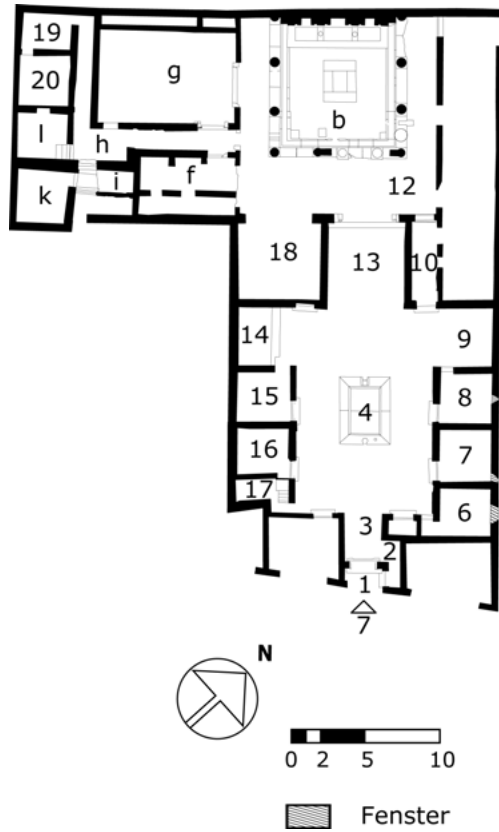
Plan 11: I 17,4 (Casa degli archi), 1. Jh. v. Chr.



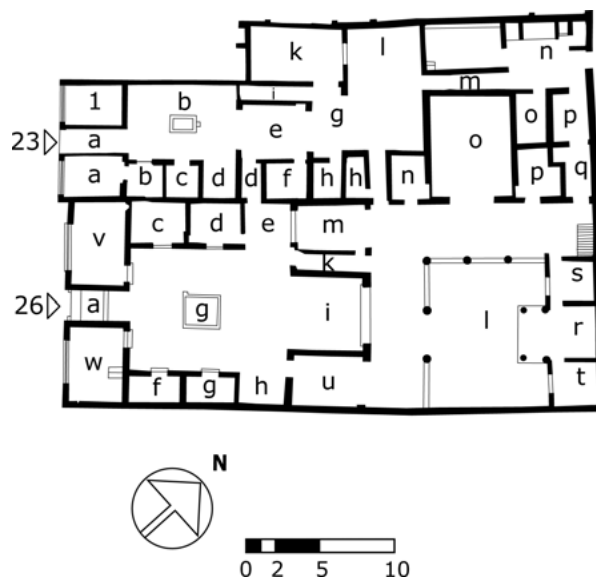
0 2 5 10

Rekonstruktion unsicher

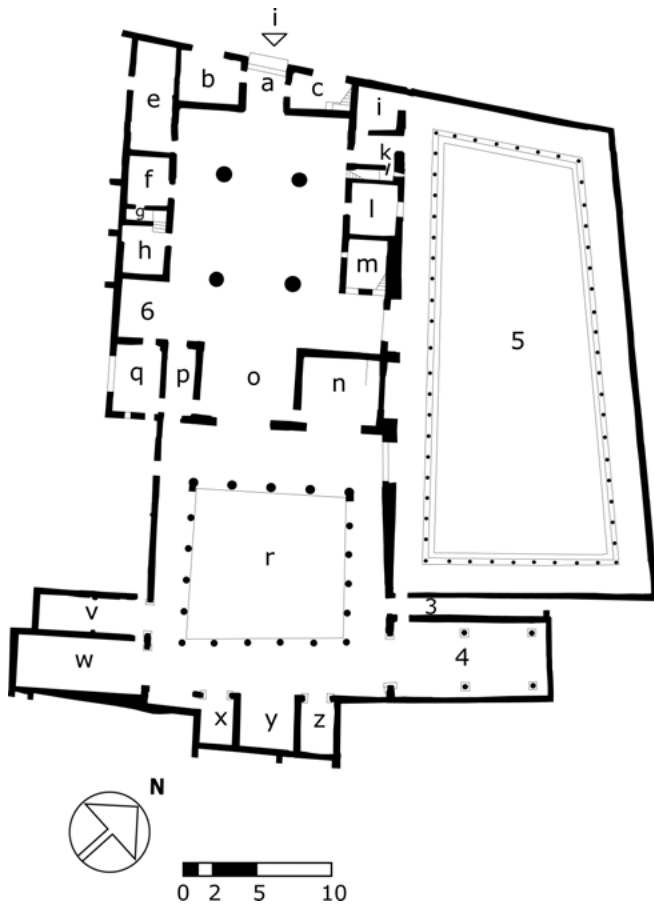
Plan 12: II 4,3 (Villa di Giulia Felice), 1. Jh. v. Chr.



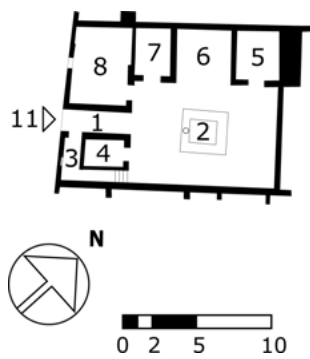
Plan 13: V 1,7 (Casa del Toro), kaiserzeitlich.



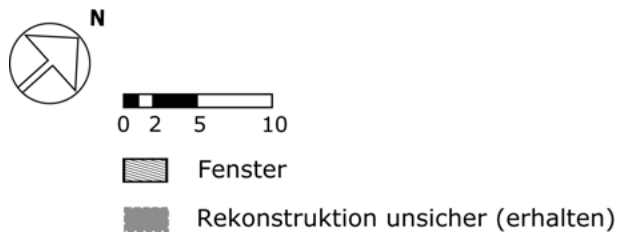
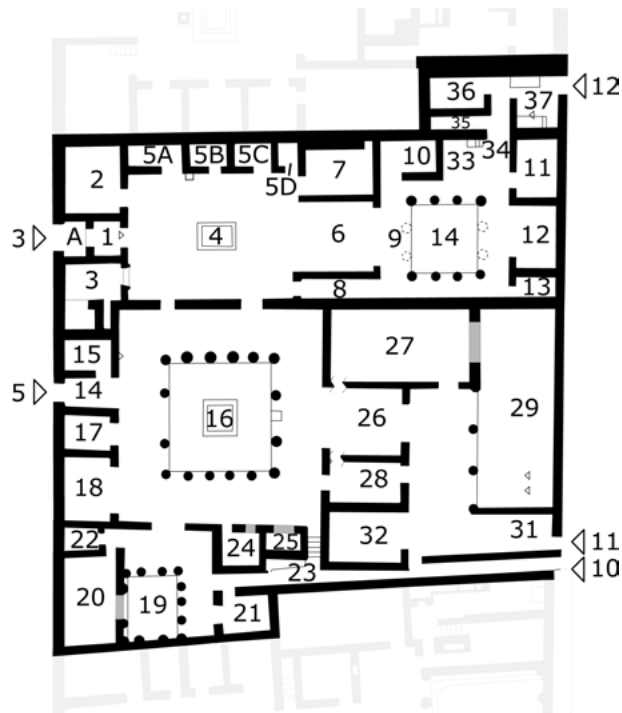
Plan 14: V 1,23.26 (Casa di Caecilius Iucundus), augusteisch.



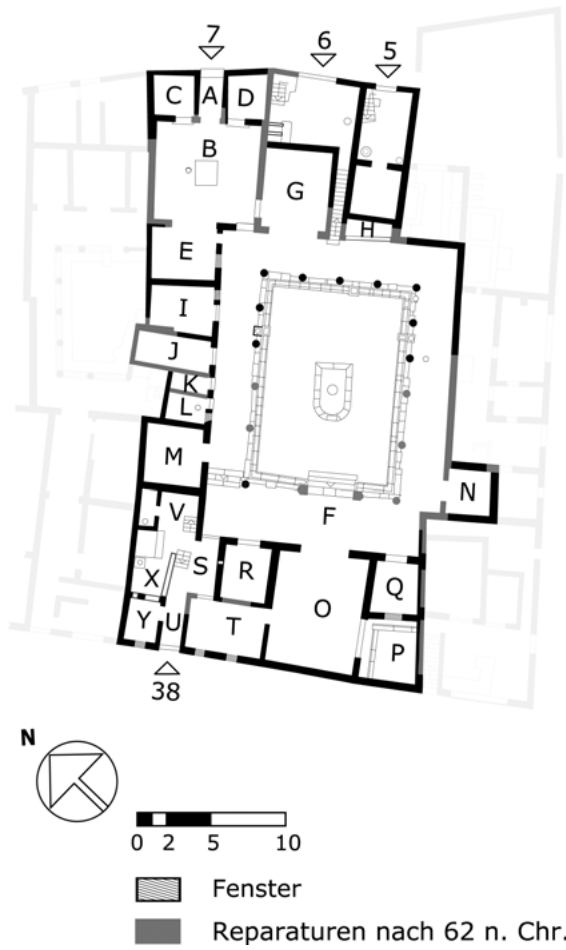
Plan 15: V 2,i (Casa delle nozze d'argento), Mitte 1. Jh. v. Chr.



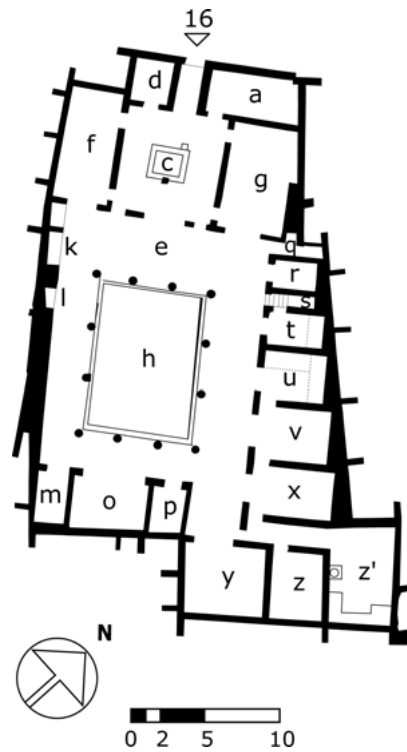
Plan 16: VI 2,11, 2. Jh. v. Chr.



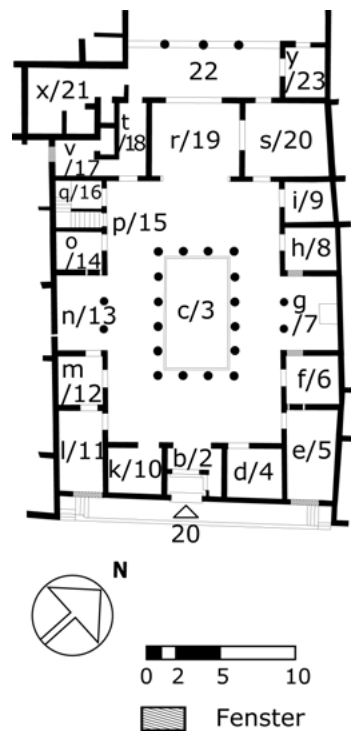
Plan 17: VI 9,3-5 (Casa del Centauro), Ende 2. Jh. v. Chr.



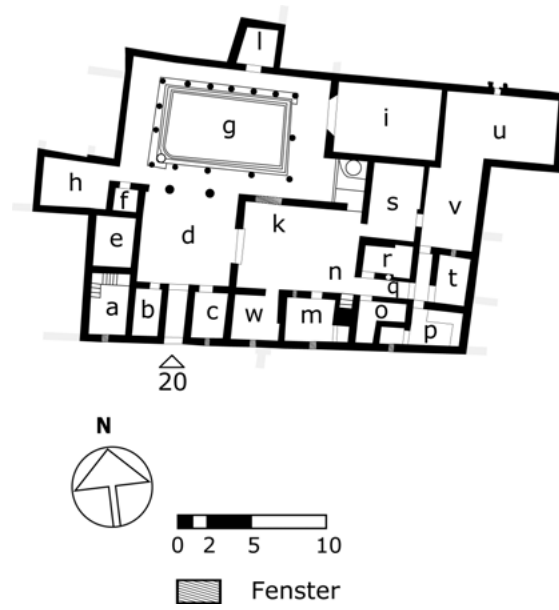
Plan 18: VI 16,7.38 (Casa degli Amorini dorati), augusteisch.



Plan 19: VII 2,16-17 (Casa di Gavius Rufus), Mitte 1. Jh. v. Chr.



Plan 20: IX 1,20 (Casa di Epidius Rufus), 2. Jh. v. Chr.



Plan 22: IX 7,20 (Casa della Fortuna), augusteisch.