

Urban residency and leukocyte profiles in a traditionally migratory songbird: Online Supplemental Material

Figure S1. Distribution of junco samples across the breeding season in southern California according to population and year. Points are colored by month and jittered to reduce overlap.

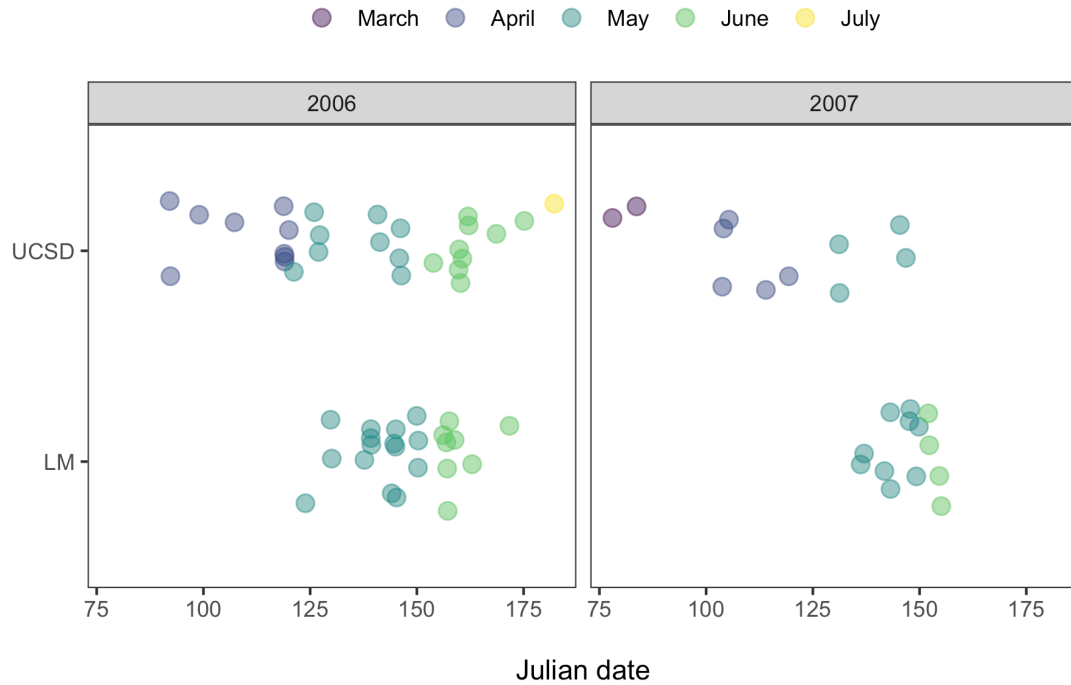


Figure S2. Modeled relationships between hematocrit and junco population (2006 only). Upper and lower bounds of the shaded regions display 95% confidence intervals from the GLMM, with thick lines showing mean prediction. Points are jittered to reduce overlap

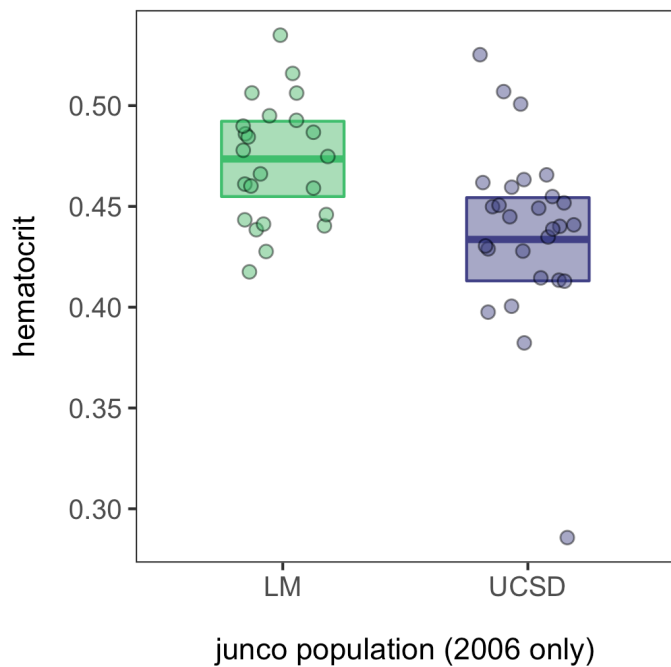


Table S1. Loadings for the robust PCA on junco leukocyte composition.

Leukocyte	PC1	PC2
Heterophil	0.30	0.38
Lymphocyte	0.21	0.24
Monocyte	0.18	-0.87
Eosinophil	-0.89	0.05
Basophil	0.19	0.19

Table S2. Results of PERMANOVA explaining variation in junco leukocyte composition (ILR-transformed proportions) as a function of population, sex, age, year, and Julian date.

Predictors	<i>df</i>	<i>F</i>	<i>R</i>²	<i>p</i>
Population	1	5.36	0.07	0.001
Sex	1	0.76	0.01	0.55
Age	1	0.59	0.01	0.64
Year	1	0.54	0.01	0.69
Date	1	1.24	0.02	0.30
Residuals	68		0.89	