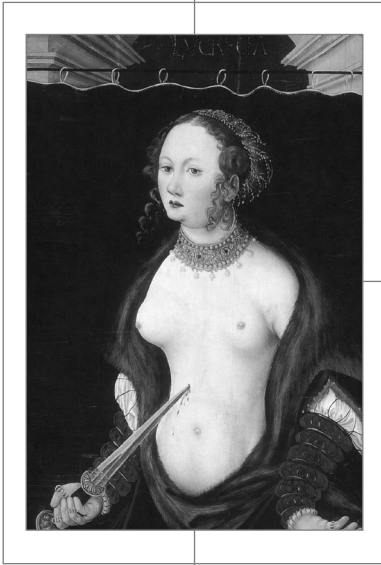


FROM SIN  
TO INSANITY





FROM SIN  
TO INSANITY

*Suicide in Early  
Modern Europe*

EDITED BY JEFFREY R. WATT

Copyright © 2004 by Cornell University

All rights reserved. Except for brief quotations in a review, this book, or parts thereof, must not be reproduced in any form without permission in writing from the publisher. For information, address Cornell University Press, Sage House, 512 East State Street, Ithaca, New York 14850.

First published 2004 by Cornell University Press

Printed in the United States of America

Design by Scott Levine

Library of Congress Cataloging-in-Publication Data

From sin to insanity : suicide in early modern Europe / edited by  
Jeffrey R. Watt.

p. cm.

Includes bibliographical references and index.

ISBN 0-8014-4278-8 (cloth)

1. Suicide—Europe—History. 2. Suicidal behavior—Europe—  
History. 3. Social history. I. Watts, Jeffrey R. (Jeffrey Rodgers),  
1958—

HV6548.E9F76 2004

362.28'094'0903—dc22

2004010277

Cornell University Press strives to use environmentally responsible suppliers and materials to the fullest extent possible in the publishing of its books. Such materials include vegetable-based, low-VOC inks and acid-free papers that are recycled, totally chlorine-free, or partly composed of nonwood fibers. For further information, visit our website at [www.cornellpress.cornell.edu](http://www.cornellpress.cornell.edu).

Cloth printing 1 0 9 8 7 6 5 4 3 2 1