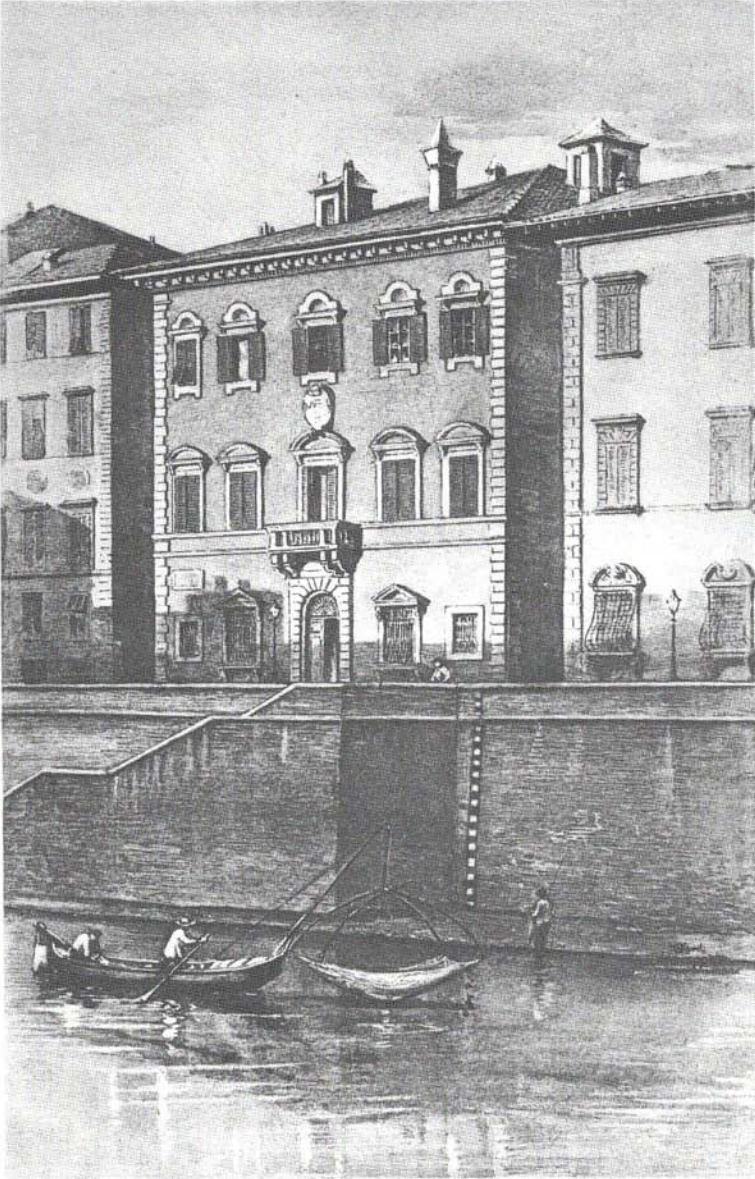


**BYRON, SHELLEY
AND THEIR PISAN CIRCLE**



VILLA LANFRANCHI, PISA
From a drawing by O. F. M. Ward

*Byron, Shelley
and their Pisan Circle*

By

C. L. CLINE

THE UNIVERSITY OF TEXAS

*“Our roots never struck so deeply as at Pisa, and the
transplanted tree flourishes not.”*

SHELLEY

CAMBRIDGE, MASSACHUSETTS
HARVARD UNIVERSITY PRESS

1952

FIRST EDITION, 1952

*Made and printed in Great Britain by
William Clowes and Sons, Limited, London and Beccles*