

# Crystal structure of 9-methoxyanthracene, $C_{15}H_{12}O$

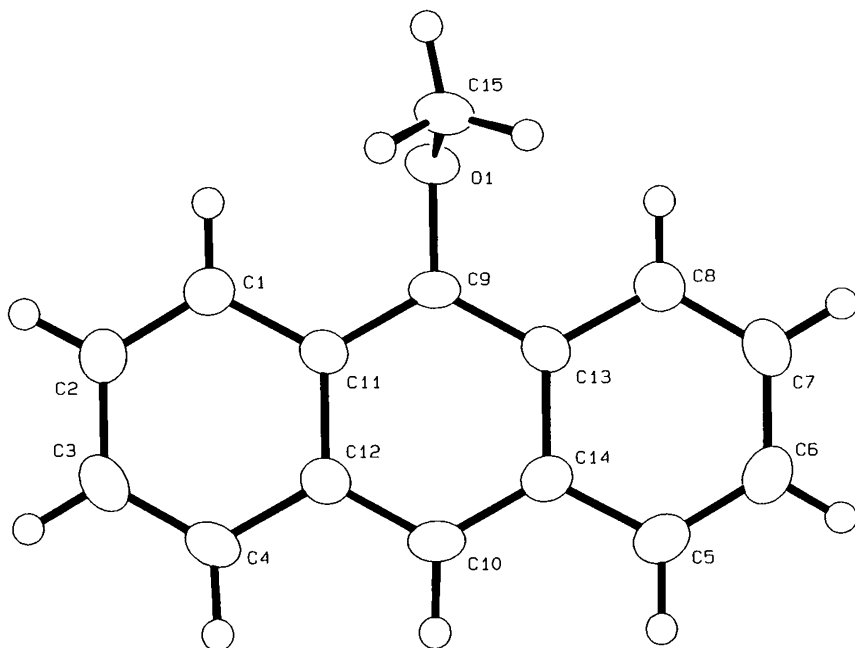
V. Langer

Department of Inorganic Chemistry, Chalmers University of Technology and University of Gothenburg, S-412 96 Gothenburg, Sweden

and H.-D. Becker

Department of Organic Chemistry, Chalmers University of Technology and University of Gothenburg, S-412 96 Gothenburg, Sweden

(Received November 12, 1992)



Source of material: see ref. 1.

Orthorhombic,  $Pca2_1$  (No. 29),  $a = 8.376(2) \text{ \AA}$ ,  $b = 15.578(3) \text{ \AA}$ ,  $c = 8.366(2) \text{ \AA}$ ,  
 $V = 1091.6 \text{ \AA}^3$ ,  $Z = 4$ ,  $R = 0.029$ .