

Crystal structure of 1-acetylanthracene, $C_{16}H_{12}O$

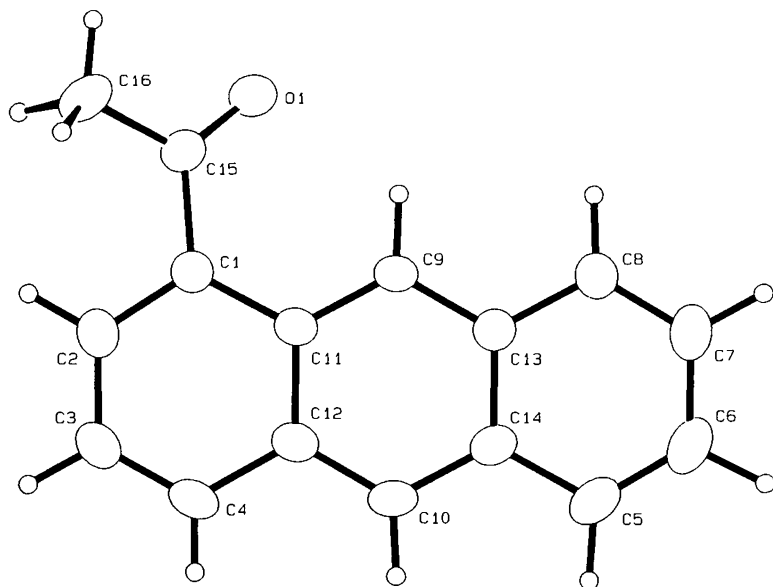
V. Langer

Department of Inorganic Chemistry, Chalmers University of Technology and University of Gothenburg, S-412 96 Gothenburg, Sweden

and H.-D. Becker

Department of Organic Chemistry, Chalmers University of Technology and University of Gothenburg, S-412 96 Gothenburg, Sweden

(Received November 12, 1992)



Source of material: see ref. 1.

Orthorhombic, $Pca2_1$ (No. 29), $a = 21.249(1) \text{ \AA}$, $b = 6.632(1) \text{ \AA}$, $c = 8.256(3) \text{ \AA}$,
 $V = 1163.5 \text{ \AA}^3$, $Z = 4$, $R = 0.034$.