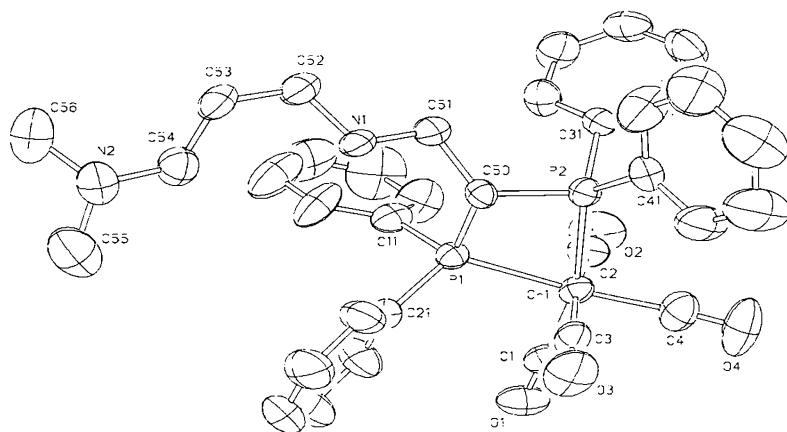


Crystal structure of N-[2,2-bis(diphenylphosphino)ethyl]-N',N'-dimethyl-1,3-propanediamine-P,P'-tetracarbonylchromium, $(\text{CO})_4\text{Cr}(\text{P}(\text{C}_6\text{H}_5)_2)_2(\text{C}_2\text{H}_3)(\text{NHC}_3\text{H}_6\text{N}(\text{CH}_3)_2)$

U. Flörke and H.-J. Haupt

Anorganische und Analytische Chemie Universität-GH Paderborn, Warburgerstr. 100, D-33098 Paderborn, Germany

(Received April 19, 1993)



Source of material: Reaction of bis-diphenylphosphanyl-ethen-chromium-tetracarbonyl with dimethylamino-propylamine in dichloromethane at 293 K for 2h. Recrystallization from methanol solution.

H-atoms were fixed at idealized positions.

Monoclinic, $P12_1/c1$ (No. 14), $a = 15.410(3) \text{ \AA}$, $b = 11.177(2) \text{ \AA}$, $c = 20.129(4) \text{ \AA}$, $\beta = 90.64(2)^\circ$, $V = 3466.8 \text{ \AA}^3$, $Z = 4$, $R = 0.056$.