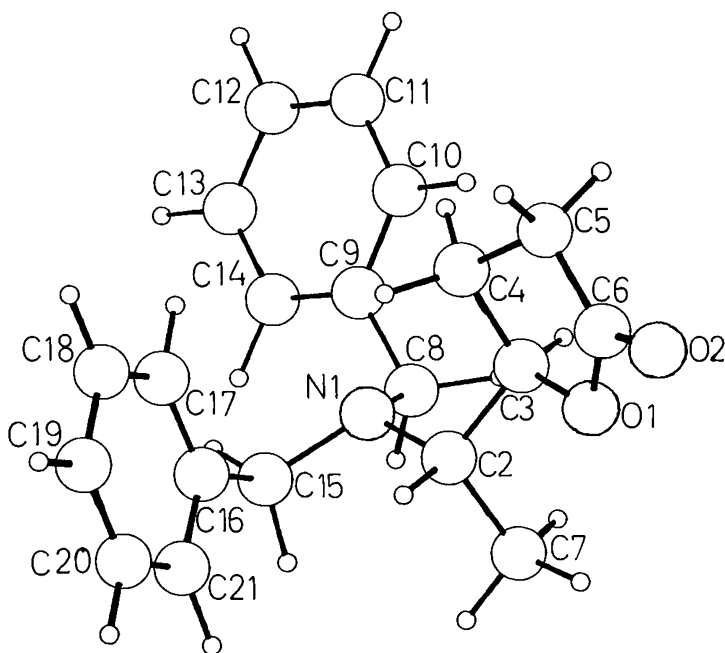


Crystal structure of (5*R*,1*S'*)-5-[1-*N,N*-dibenzylamino)ethyl]-2(3*H*)-4,5-dihydrofuranone, $\text{CH}(\text{CH}_2)_2\text{COOCHCH}_3\text{NCH}_2(\text{C}_6\text{H}_5)\text{CH}_2(\text{C}_6\text{H}_5)$

S. Hormuth, H. -U. Reißig, S. Foro and H. J. Lindner

Institut für Organische Chemie, Technische Hochschule Darmstadt, Petersenstr. 22, D-64287 Darmstadt, Germany

(Received April 23, 1993)



Source of material: see ref. 1.

The compound is of interest as precursor of protease inhibitors. All hydrogen atoms are geometrically positioned.

Orthorhombic, $P2_12_12_1$ (No. 19), $a = 8.324(3) \text{ \AA}$, $b = 9.049(1) \text{ \AA}$, $c = 23.328(5) \text{ \AA}$, $V = 1757.2 \text{ \AA}^3$, $Z = 4$, $R = 0.049$.